



Lettings

COMING SOON

Book your viewing now by contacting our Lettings Team

Robert
Luff & Co
Sales | Lettings | Commercial

Per Month

£1,195 Per Month

Littlehampton Road, Worthing

- Newly redecorated, purpose-built two-bedroom flat
- Modern spacious lounge
- EPC energy rating E
- New flooring throughout
- Newly fitted kitchen
- Two bedrooms
- Private garage included
- Modern neutral decor

Robert Luff & Co are delighted to offer this newly redecorated, purpose-built two-bedroom ground floor flat located in the popular Thomas A Becket area. This bright and modern **NEWLY REFURBISHED AND MODERNIZED** property features a spacious lounge open plan newly fitted kitchen **WITH NEW APPLIANCES**, two bedrooms, **NEW FLOORING THROUGHOUT** and a **NEW BATHROOM SUITE**.

NEWLY DECORATED THROUGHOUT - EARLY VIEWING ESSENTIAL.

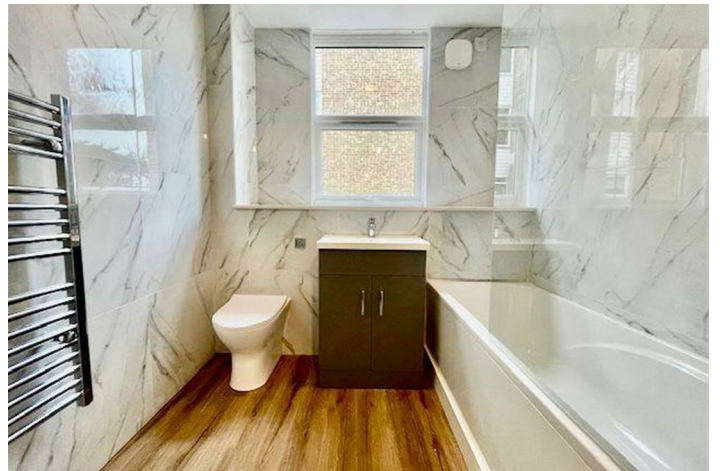
Also included, a **GARAGE** for convenient parking or additional storage.

T: 01903 331247 E: info@robertluff.co.uk
www.robertluff.co.uk

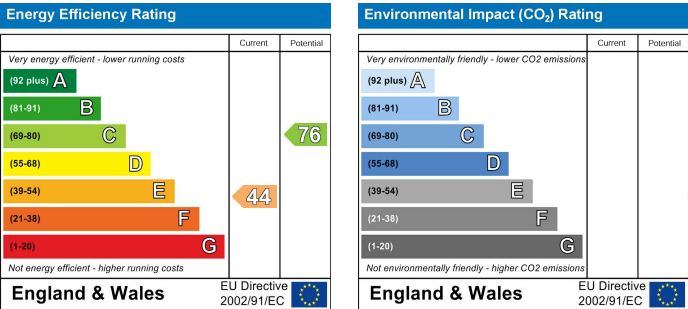
**Robert
Luff & Co**
Sales | Lettings | Commercial



Accommodation



30 Guildbourne Centre, Worthing, West Sussex, BN11 1LZ
T: 01903 331247 E: info@robertluff.co.uk
www.robertluff.co.uk



The information provided about this property does not constitute or form any part of an offer or contract, nor may it be regarded as representations. All interested parties must verify accuracy and your solicitor must verify tenure/lease information, fixtures and fittings and, where the property has been extended/converted, planning/building regulation consents. All dimensions are approximate and quoted for guidance only as are floor plans which are not to scale and their accuracy cannot be confirmed. References to appliances and/or services does not imply that they are necessarily in working order or fit for the purpose.